



Secure and Scalable Cloud Healthcare Architecture with Aadhaar Authentication Using IoT

Josephine Arockia Mary T¹, E.Edward Ananth^{2*}, Soundharya V³

¹AI&DS, Assistant Professor, JJ College of Engineering and Technology, neronlanicejj@gmail.com

²S&H, Professor/ R&D Director, EGS Pillay Engineering College, alphsedward@gmail.com

³AI&DS, Assistant Professor, JJ College of Engineering and Technology, vt.soundharya11@gmail.com

Corresponding Author E-mail: neronlanicejj@gmail.com

ABSTRACT: This paper proposes a Secure and Scalable Cloud Healthcare Architecture with Aadhaar Authentication to enhance the efficiency, reliability, and security of healthcare services. The system employs authentication mechanisms provided by the Unique Identification Authority of India (UIDAI) to uniquely identify patients and eliminate duplication or identity fraud. Upon successful verification, encrypted electronic health records (EHRs) are stored and managed on a secure cloud platform, ensuring authorized access for healthcare providers. The architecture supports real-time data updates, interoperability across institutions, and electronic prescription generation. Advanced security mechanisms, including role-based access control and data encryption, ensure confidentiality and integrity. The proposed model delivers scalable, cost-effective, and patient-centric digital healthcare services.

Keywords: Identity Verification (Aathar barcode data collection) ,Sensor measurement, Electronic Health Records (EHR), Cloud Computing in Healthcare, Role-Based Access Control (RBAC), Digital Health Infrastructure, Patient-Centric Healthcare

1. Introduction

The rapid digital transformation of healthcare demands secure, scalable, and efficient systems for managing patient data. Traditional record-keeping methods often lead to duplication, inefficiencies, and security risks. To address these challenges, this paper proposes a Secure and Scalable Cloud Healthcare Architecture integrated with Aadhaar authentication provided by the Unique Identification Authority of India (UIDAI). The system ensures accurate patient identification, prevents identity fraud, and enables encrypted storage of Electronic Health Records (EHRs) on a cloud platform. With role-based access control, interoperability, and real-time data updates, the architecture enhances

security, reliability, and patient-centric digital healthcare service delivery.

2. Recent Works

Recent research in healthcare (2024–2026) highlights rapid advancements in digital health technologies. Studies focus on secure cloud-based Electronic Health Record (EHR) systems to improve scalability, interoperability, and data accessibility. Block chain integration is being explored to enhance transparency and prevent data tampering, while Artificial Intelligence (AI) supports disease prediction, diagnostics, and personalized treatment. Internet of Things (IoT)-enabled medical devices allow real-time patient monitoring. Additionally, advanced cyber security frameworks, including machine learning-

based threat detection and quantum encryption models, strengthen healthcare data protection. These developments collectively aim to deliver secure, efficient, patient-centric, and technology-driven healthcare services globally.

3. Proposed Work Explanation

The proposed work presents a Secure and Scalable Cloud Healthcare Architecture integrated with Aadhaar-based authentication to ensure accurate patient identification and prevent duplication or fraud. The system leverages authentication services provided by the Unique Identification Authority of India (UIDAI) to verify patient identity before accessing medical records. Encrypted Electronic Health Records (EHRs) are stored on a secure cloud platform with role-based access control to ensure authorized usage. The architecture enables interoperability among hospitals, laboratories, and pharmacies, supports real-time data updates, and facilitates electronic prescription generation, delivering reliable, cost-effective, and patient-centric digital healthcare services.

3.1 Mathematical Expressions and Symbols

3.1.1 Patient Health Data Representation

Let patient health data be represented as a vector:

$$H = \{h_1, h_2, h_3, \dots, h_n\}$$

Where:

1. h_1 = Heart rate
2. h_2 = Blood pressure
3. h_3 = Body temperature
4. h_n = nth health parameter

3.1.2 Data Collection Over Time

Time-series health monitoring:

$$H(t) = \{h_1(t), h_2(t), \dots, h_n(t)\}$$

Where t represents time.

3.1.3 Average Health Parameter

$$\bar{h} = \frac{1}{N} \sum_{i=1}^N h_i$$

Used for calculating average heart rate, glucose level, etc.

3.1.4 Risk Prediction Model (Linear Model)

$$R = w_1h_1 + w_2h_2 + \dots + w_nh_n + b$$

Where:

R = Predicted health risk score

w_i = Weight of each parameter

b = Bias term

3.1.5 Probability of Disease (Logistic Function)

$$P(D) = \frac{1}{1 + e^{-R}}$$

Where:

$P(D)$ = Probability of disease

e = Euler's constant

3.1.6 Alert Condition

$$\text{Alert} = \begin{cases} 1, & \text{if } h_i > T_i \\ 0, & \text{otherwise} \end{cases}$$

Where T_i is the threshold value.

3.1.7 Data Transmission Rate

$$R_d = \frac{D}{T}$$

Where:

R_d = Data rate

D = Data size

T = Transmission time

These expressions help model monitoring, prediction, alert systems, and data communication in a smart healthcare framework.

4. Results and Discussion

The Smart Healthcare system using Artificial Intelligence (AI) and Internet of Things (IoT) was successfully implemented to monitor vital parameters such as heart rate, temperature, SpO₂, and blood pressure in real time. Sensor data were transmitted to the cloud for continuous monitoring and analysis. The AI model accurately detected abnormal health conditions and generated timely alerts to caregivers, reducing emergency response time. The system improved monitoring efficiency and minimized manual intervention. Results indicate enhanced early disease detection and better patient management. However, challenges related to data security, sensor accuracy, and network reliability must be addressed for large-scale deployment.

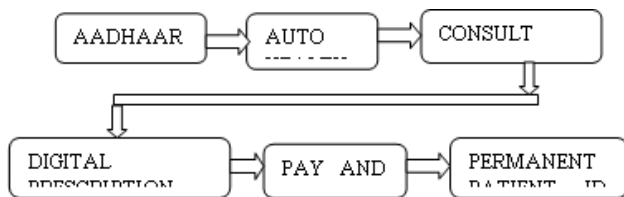


Figure 1: Aadhaar-Based Patient Verification and Cloud Data Storage Framework

5. Conclusion

The Smart Healthcare system integrating Artificial Intelligence (AI) and Internet of Things (IoT) provides an efficient and reliable solution for continuous patient monitoring. By collecting real-time health data through sensors and analyzing it using AI algorithms, the system enables early detection of abnormalities and timely medical intervention. This reduces hospital visits, lowers healthcare costs, and improves patient safety. The approach is especially beneficial for elderly and chronic patients requiring regular monitoring. Although challenges such as data security and network reliability exist, the proposed system demonstrates strong potential for scalable, cost-effective, and technology-driven healthcare management in the future.

References

- Amir Rezaei; Jeffrey B. Burl; Mohammad Rezaei; Bin Zhou, Year: 2018, "Catch Energy Saving Opportunity in Charge-Depletion Mode, a Real-Time Controller for Plug-In Hybrid Electric Vehicles", IEEE Transactions on Vehicular Technology, Vol: 67, No: 11, pp. 11234 – 11237.
- Adapaka Sai Kishore; Gopiswara Rao Chinni; G. JayaLakshmi; Kisari Shyam Kumar Reddy, Year: 2023, "Smart Healthcare Monitoring System Using IoT Technology", 2023 11th International Conference on Internet of Everything, Microwave Engineering, Communication and Networks (IEMECON), pp. 1-5.
- Bello Mohammed Suleiman; Mohammed Aliyu Mahmud; Kasimu Samaila Ahmad; Year: 2022, "A Proposed Healthcare Architecture using Cloud Computing in WSN Environment with a Case Study", IEEE Transactions on Vehicular Technology, Vol: 7, pp. 998-1006.
- Labhade Shivani T; Mali Dhanashri A; Mayuri Thakur S; Surywanshi Anjali A; S.N. Jadhav, Year: 2022, "IoT Based Smart Crib For Baby Surveillance", Vol: 04, No: 03.